

# STANDARD DETAILS

## **BID SET**

For the Construction of

HILLIARD N. FLETCHER WATER RESOURCE RECOVERY  
FACILITY HEADWORKS IMPROVEMENTS

TUSCALOOSA, ALABAMA

OCA Project No. A19-1146  
Garver Project No. 21W10480

VOLUME 3 OF 3

Standard Details

Prepared For:

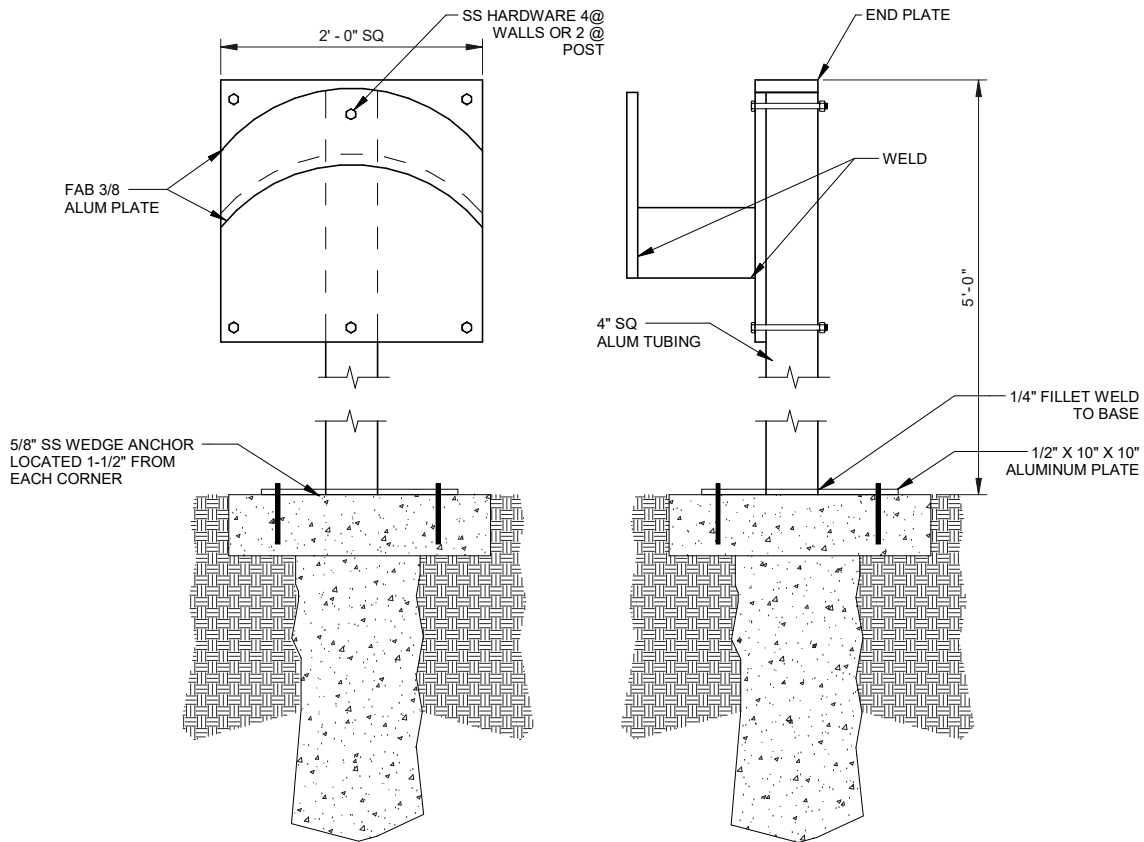
**City of Tuscaloosa**

January 2024



**NOTES:**

1. PROVIDE HOSE RACK AT ALL WALL AND YARD HYDRANTS UNLESS A HOSE REEL IS INDICATED ON THE DRAWINGS.
2. CONTRACTOR TO PROVIDE 100' OF 1" HOSE.
3. CONTRACTOR TO PROVIDE 1" FEMALE CAM-AND-GROOVE COUPLINGS ON EACH END OF HOSE
4. CAM AND GROOVE FITTING TO BE COMPATIBLE WITH OPW KAMLOK.
5. LESS POST & CONC FOR WALL MT INSTALLATION.

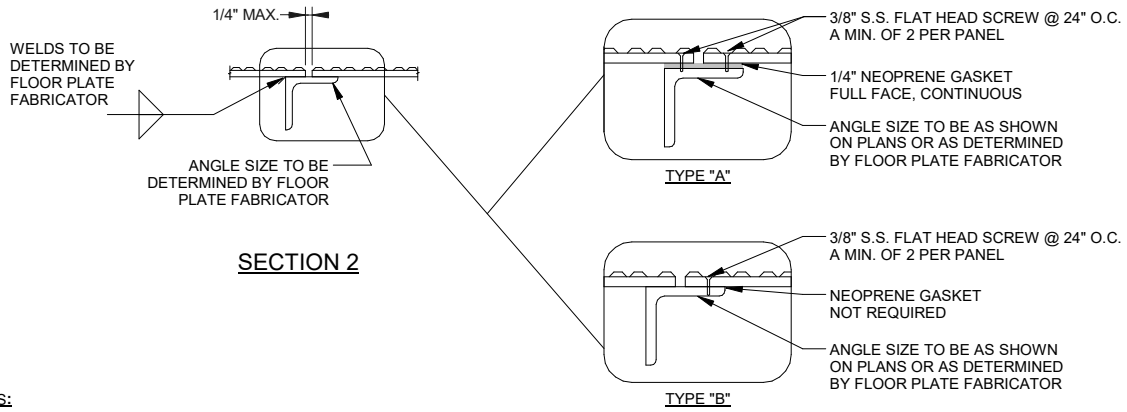
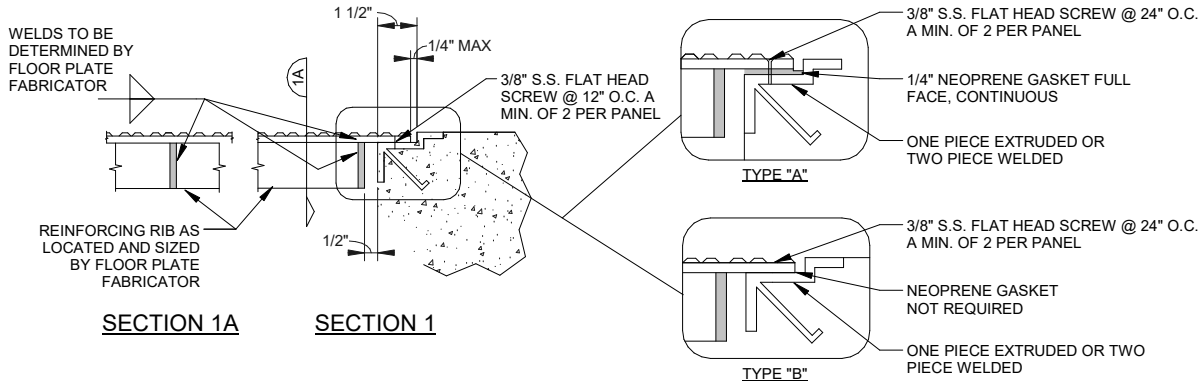


**CITY OF TUSCALOOSA**  
 4010 REESE PHIFER AVENUE, TUSCALOOSA, AL 35401  
**HILLIARD N. FLETCHER WRRF**

JOB NO.: 21W10480

DETAIL NOT TO SCALE

REV	DATE	DESCRIPTION	BY
		<b>SELF SUPPORTED HOSE RACK</b>	
			DIVISION <b>D05</b>
			SECTION - DETAIL NO. <b>5000-003</b>
			DATE: DEC. 2023



**NOTES:**

1. TYPE "A" WITH NEOPRENE GASKET TO BE USED AT ALL EXTERIOR OR ODOR CONTROL LOCATIONS, UNO.
2. REFER TO DETAIL D05/5000-902 FOR ALUMINUM PLATE CONNECTION DETAIL NOTES.
3. 1/4", 3/8" OR 1/2" ALUMINUM CHECKED PLATE AS REQ'D OR SHOWN ON PLANS.

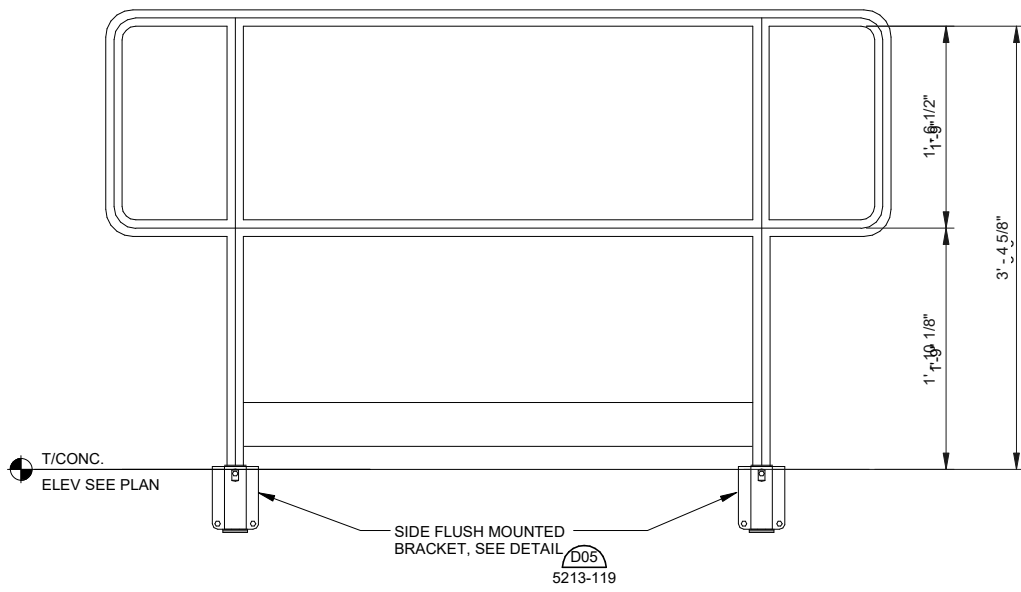


**CITY OF TUSCALOOSA**  
 4010 REESE PHIFER AVENUE, TUSCALOOSA, AL 35401  
**HILLIARD N. FLETCHER WRRF**

JOB NO.: 21W10480

DETAIL NOT TO SCALE

REV	DATE	DESCRIPTION	BY
<b>CONNECTION DETAILS</b>			
			DIVISION <b>D05</b>
			SECTION - DETAIL NO. <b>5000-901</b>
			DATE: DEC. 2023



SIDE MOUNTED REMOVEABLE GUARDRAIL

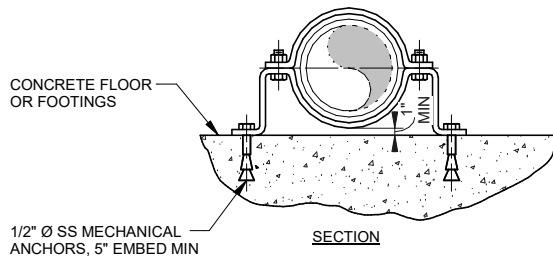
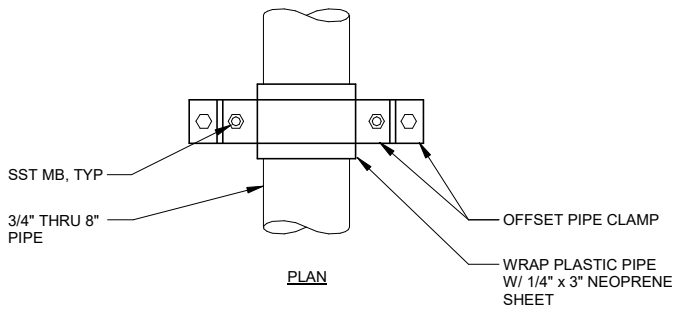


**CITY OF TUSCALOOSA**  
 4010 REESE PHIFER AVENUE, TUSCALOOSA, AL 35401  
**HILLIARD N. FLETCHER WRRF**

JOB NO.: 21W10480

DETAIL NOT TO SCALE

REV	DATE	DESCRIPTION	BY
		<b>REMOVABLE SIDE FLUSH MOUNT GUARDRAIL</b>	
			DIVISION <b>D05</b>
			SECTION - DETAIL NO. <b>5213-602</b>
			DATE: DEC. 2023



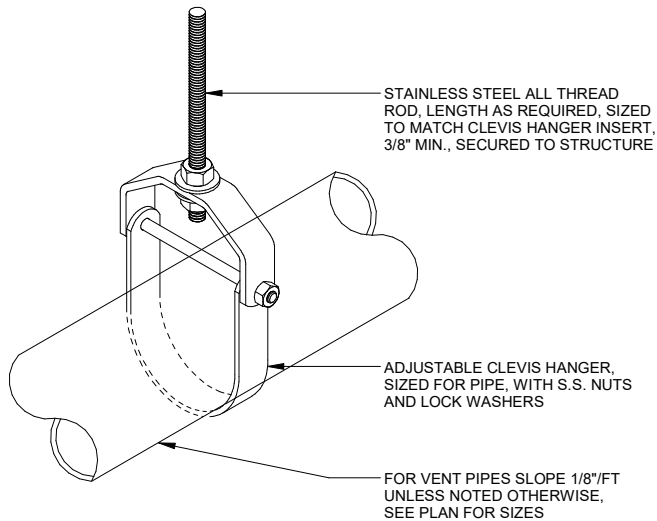
REV	DATE	DESCRIPTION	BY
		FLOOR MOUNTED PIPE SUPPORT	
			DIVISION D22
			SECTION - DETAIL NO. 0529-005
			DATE: DEC. 2023



CITY OF TUSCALOOSA  
 4010 REESE PHIFER AVENUE, TUSCALOOSA, AL 35401  
 HILLIARD N. FLETCHER WRRF

JOB NO.: 21W10480

DETAIL NOT TO SCALE



ALL THREAD MINIMUM SUPPORT ROD SIZE							
PIPE SIZE	≤ 6"	8"	10"-12"	14"	16"-18"	20"	24"
ALL-THREAD SIZE	3/8"	1/2"	5/8"	3/4"	7/8"	1"	1-1/4"

STEEL AND DUCTILE IRON SUPPORT SPACING (MAXIMUM)							
PIPE SIZE	≤ 1"	1 1/2" - 2 1/2"	3"-4"	6"-8"	10"-12"	14"-18"	20"-24"
SPACING (FEET)	6	8	10	12	14	16	18

STAINLESS STEEL SUPPORT SPACING				
PIPE SIZE	1"-6"	8"-12"	14"-16"	18"-24"
SPACING (FEET)	8	10	12	14

**NOTES:**

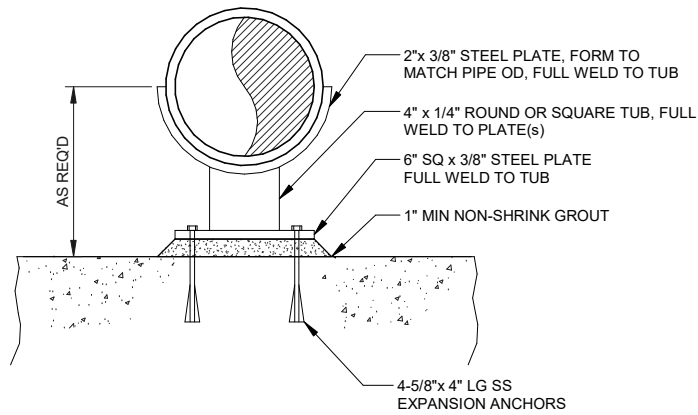
1. FOR COPPER PIPING, MAXIMUM SUPPORT SPACING 2 FEET LESS PER SIZE. SIZE SHOWN IN ABOVE TABLE, WITH 1" AND SMALLER PIPE SUPPORTED EVERY 5'-0".
2. FOR PVC PIPE, REDUCED SUPPORT SPACING PER MANUFACTURER RECOMMENDATION FOR FLOW TEMPERATURE IN PIPE.
3. FOR TRAPEZE HANGER TAKE SPACING OF SMALLEST SIZE ON TRAPEZE.
4. UTILIZE PURLIN BEAM CLAMPS FOR ATTACHMENT TO STRUCTURE.



**CITY OF TUSCALOOSA**  
 4010 REESE PHIFER AVENUE, TUSCALOOSA, AL 35401  
**HILLIARD N. FLETCHER WRRF**  
 JOB NO.: 21W10480

REV	DATE	DESCRIPTION	BY
		<b>PIPE HANGER</b>	
			DIVISION <b>D22</b>
			SECTION - DETAIL NO. <b>0529-008</b>
			DATE: DEC. 2023

DETAIL NOT TO SCALE



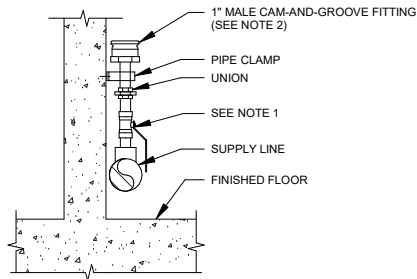
CITY OF TUSCALOOSA  
4010 REESE PHIFER AVENUE, TUSCALOOSA, AL 35401

HILLIARD N. FLETCHER WRRF

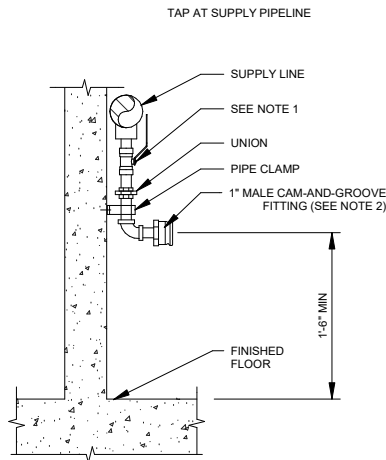
JOB NO.: 21W10480

REV	DATE	DESCRIPTION	BY
		NON-ADJUSTABLE FLOOR MOUNTED PIPE SUPPORT	DIVISION D22
			SECTION - DETAIL NO. 0529-013
			DATE: DEC. 2023

DETAIL NOT TO SCALE



ABOVE SUPPLY PIPELINE



TAP AT SUPPLY PIPELINE

BELOW SUPPLY PIPELINE

NOTES:

1. ALL FLUSHING SUPPLY TAPS TO BE CONTROLLED BY INDIVIDUAL ISOLATION VALVES (BALL OR PLUG)
2. CAM AND GROOVE FITTING TO BE COMPATIBLE WITH OPW KAMLOK.
3. CONTRACTOR TO PROVIDE 1" FEMALE CAM-AND-GROOVE CAP PER FLUSHING SUPPLY CONNECTION.



CITY OF TUSCALOOSA  
4010 REESE PHIFER AVENUE, TUSCALOOSA, AL 35401

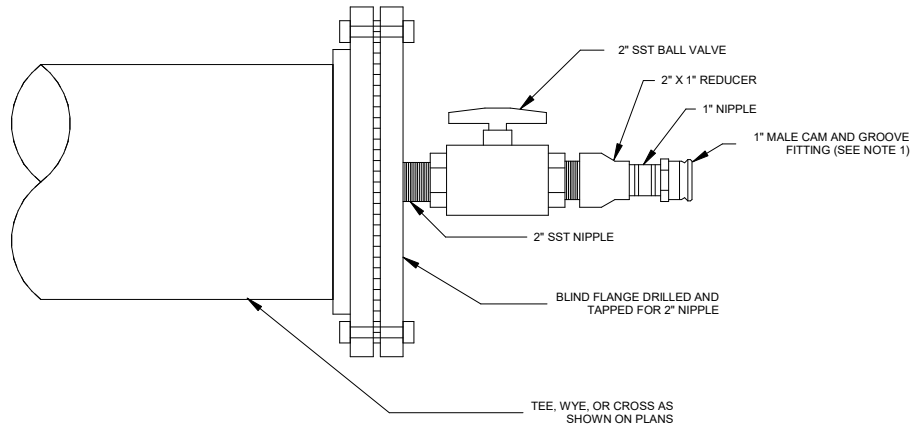
HILLIARD N. FLETCHER WRRF

JOB NO.: 21W10480

DETAIL NOT TO SCALE

REV	DATE	DESCRIPTION	BY
		<b>POTABLE WATER FLUSHING SUPPLY CONNECTION</b>	DIVISION <b>D40</b>
			SECTION - DETAIL NO. <b>2339-019</b>
			DATE: DEC. 2023





NOTES:

1. CAM AND GROOVE FITTING TO BE COMPATIBLE WITH OPW KAMLOK.
2. CONTRACTOR TO PROVIDE 1" FEMALE CAM-AND-GROOVE CAP PER FLUSHING CONNECTION.



**CITY OF TUSCALOOSA**  
 4010 REESE PHIFER AVENUE, TUSCALOOSA, AL 35401  
**HILLIARD N. FLETCHER WRRF**

JOB NO.: 21W10480

REV	DATE	DESCRIPTION	BY
		<b>FLUSHING CONNECTION</b>	
			DIVISION <b>D40</b>
			SECTION - DETAIL NO. <b>2400-030</b>
			DATE: DEC. 2023

DETAIL NOT TO SCALE